

Medical storage solutions



Cubro®

Contents

1	Introduction	16	ISO 60-40 enclosed cabinets
2	Planning and design	18	Side panels for medical cabinets
3	Modular ISO 60-40 system	19	Storage carts
4	ISO 60-40 trays and baskets	22	ISO 60-40 open trolleys
6	Sterile high resistance trays	23	Chrome wire
8	Accessories, dividers and label holders	24	Chrome wire components
10	ISO 60-40 open rack system	26	Chrome wire baskets
12	Telescopic slides	28	Compactor shelving
14	Container and sterile pack storage system		

A well designed storage system can increase storage capacity by up to 50% within the same footprint area

Cubro® are market leaders in the design, supply and installation of medical storage solutions

We have significant experience in department layout, storage designs, the standards and installation of both modular and chrome wire shelving and transport systems.

Storage systems

Our storage systems are divided into three broad categories.

- Chrome Wire Storage Systems
- Modular ISO 6040 System
- Transport Systems

Compliance

Our storage systems are compliant with AS/NZS 4187 and ISO 3394.

Ask for a free consultation

Contact one of our friendly team for an evaluation of your existing sterile storage areas, we will be pleased to provide you with a free design and proposal to maximise your storage capacity and increase the efficiency of your work flows.

Freephone: 0800 101 255

Email: hospitalcare@cubro.co.nz

Planning and design

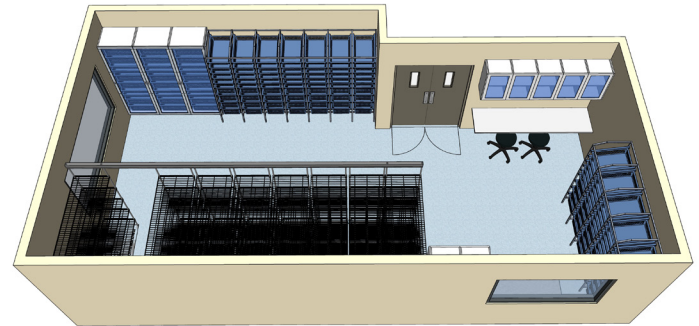
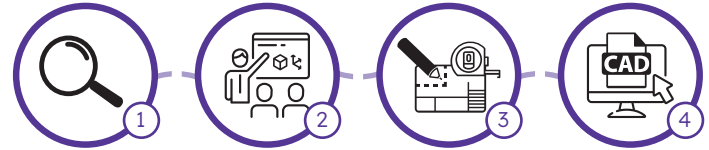
CAD design

At Cubro we use 3D CAD programs to design your department and medical storage systems, giving you a virtual walk through of your completed department.

As we understand clinical workflows, the standards and the storage options, we can confidently advise you on storage solutions that are compliant with audit standards, increase efficiency and economise on stock levels without running out.

Our design staff will:

1. Scope out your storage requirements
2. Review existing workflows and systems
3. Measure up your department and available areas
4. Present a proposal with your custom 3D design and indicative pricing



Modular ISO 60-40 system



Cubro designs and installs highly efficient modular storage systems

Modular storage provides comprehensive and integrated medical storage products and solutions. The core of the systems is the ISO 60-40 modular system of trays and baskets.

The system allows your hospital or nursing home to store, handle and move all medications and medical devices from the central pharmacy or storage room to the ward and finally to the patient's bedside.

Modular storage systems include trays, baskets and dividers, fixed open and closed modular shelves, as well as mobile modular storage units and transport carts.

ISO 60-40 trays and baskets

Trays and baskets are designed for standard storage

Trays are modules without aeration holes. Note that some trays are designed not to accept dividers.
Baskets are modules with aeration holes.

Sizes	600mm x 400mm and 300mm x 400mm
Heights	Available in 50mm, 100mm and 200mm
Material	Acrylonitrile butadiene styrene (ABS), cream color or polycarbonate (PC), clear plastic
Cleaning	Machine washable with either pH-neutral or slightly alkaline detergents and disinfectants

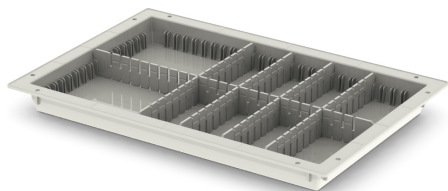
Features

- Basket holds up to 40kg
- Modules and dividers are injection-moulded from ABS or polycarbonate plastic, which makes their surfaces smooth and easy to clean
- Temperature resistance: -20°C to 95°C
- Optimum storage utilisation for articles of different sizes

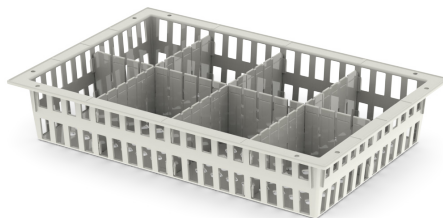


Dividers for 100mm and 200m trays and baskets

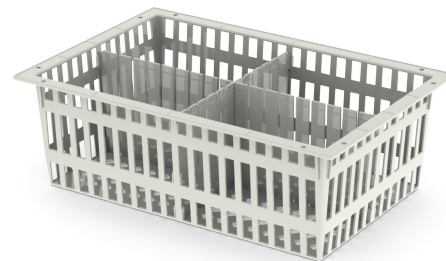
	100mm	200mm
Short divider	0920-1320-05	0920-1330-05
Long divider	0920-1325-05	0920-1335-05



50mm ABS tray **0920-1100-10**
 Short divider **0920-1310-05**
 Long divider **0920-1315-05**



100mm ABS basket **0920-1210-05**



200mm ABS basket **0920-1220-05**



100mm ABS tray **0920-1110-05**

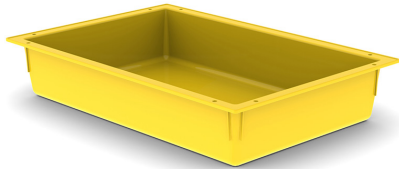


200mm ABS tray **0920-1120-05***
 *By special order only

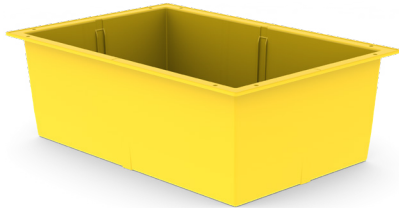


100mm ABS tray **0920-1145-05**
 ABS tray lid
 for 100mm and
 200mm trays **0920-1145-10**
 * Not compatible with 50mm trays

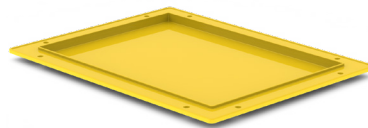
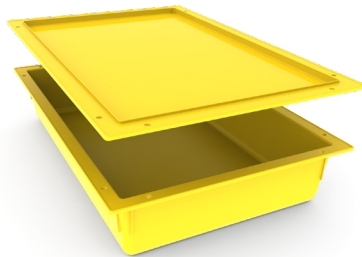
Sterile high resistance trays



100mm **0920-1150-05**



200mm **0920-1155-05**



Lid **0920-1160-05**



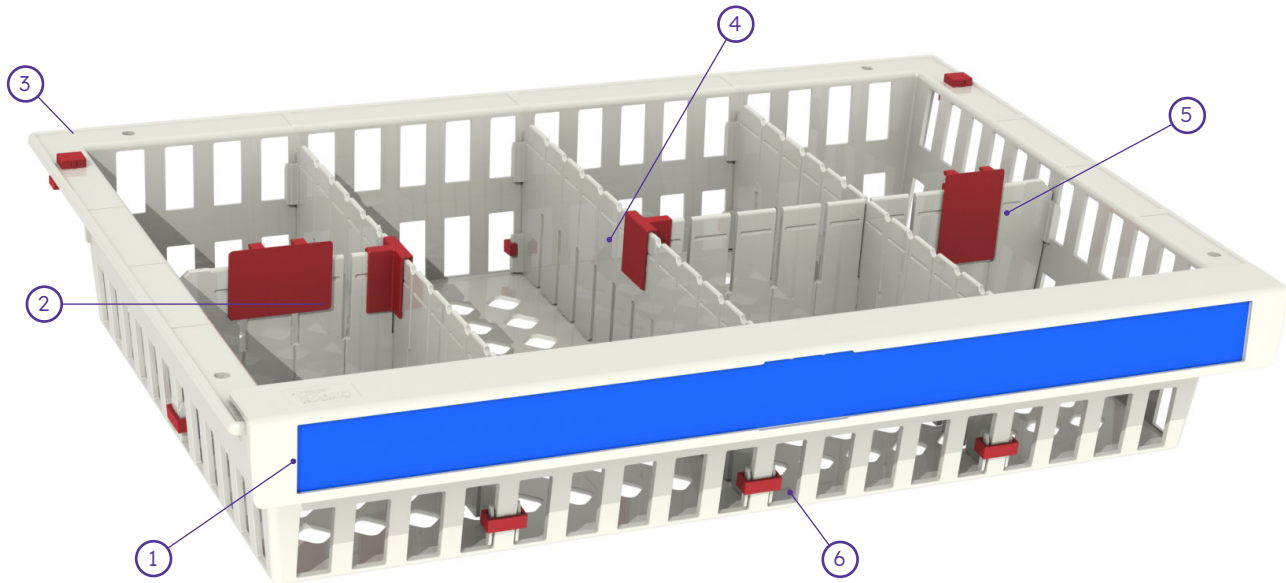


Palmerston North Hospital anaesthetic storage room install. The modular ISO 60-40 open rack system increased storage capacity by at least 30%

Accessories, dividers and label holders

System accessories

Unique dividable trays and baskets, enabling quick implementation of stock management systems based on barcodes, RFID or Kanban processes.





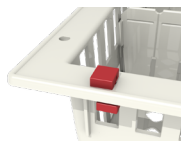
- ① **Label handle**
Handle with interchangeable label strip insert for 600mm wide trays and baskets. Coloured strips are additional.

E-type: 0920-1380-05

U-type: 0920-1385-05



- ② **Horizontal plastic label holder**
Can be fixed on top of the dividers c. at front edge of baskets.
0920-1395-05



- ③ **Basket stopper**
Prevents basket from falling when being pulled.
0920-1350-05



- ④ **T-holder for dividers**
Allows use of custom length dividers.
0920-1360-05



- ⑤ **Vertical plastic label holder**
Can be fixed on top of the dividers or at front edge of baskets.
0920-1390-05

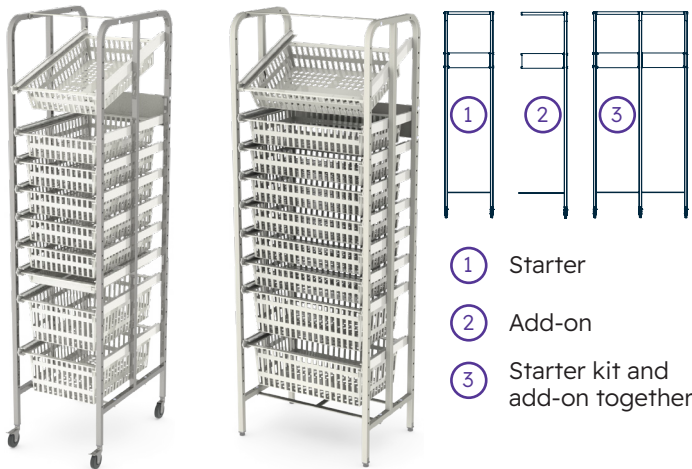


- ⑥ **Dividers lock**
Keeps dividers locked in place.
0920-1365-05

ISO 60-40 open rack system

Clinicians need to quickly and easily locate supplies for better patient care and efficient operations

Studies show that nurses spend at least 5-20% of their time on retrieving supplies. Well-designed and implemented supply storage and inventory management systems can dramatically decrease time spent by nurses on retrieving supplies.



- 1 Starter
- 2 Add-on
- 3 Starter kit and add-on together

Features

- Efficiently utilises floor space
- Simple colour-coding technology to locate items
- Baskets can be permanently angled or stored horizontally and tilted while in use
- Tool-free repositioning of basket configuration
- Easy-to-clean, smooth surfaces
- Pull out modules for easy cleaning
- 40kg load capacity
- Telescopic rails for loads exceeding 10kg
- Baskets can be pulled and tilted (up to 5kg)

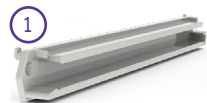
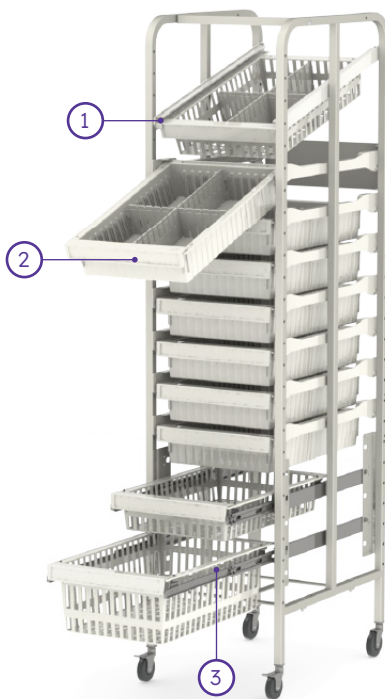
Code	Product description	Depth	Width
0920-1622-05	Starter rack – U	651mm	466mm
0920-1622-10	Add on rack – U	651mm	441mm
0920-1612-05	Starter rack – E	451mm	666mm
0920-1612-10	Add on rack – E	451mm	641mm

System components

Category colours and rack locator



Rails



Angled rails

Fixed rails for top access.



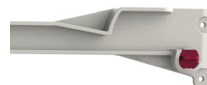
Horizontal/tilt rails

Baskets can be pulled and tilted (up to 5 kg). Optional “click-in” wheels for smoother basket sliding (5-10kg).



Telescopic rails

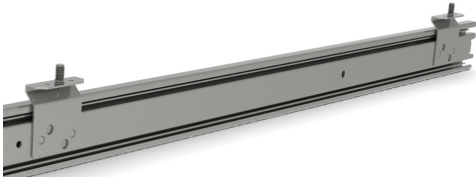
To be used with baskets heavier than 10kg. 100% extension.



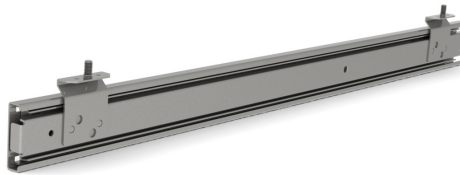
For safety, baskets on telescopic slides at levels above 1400mm can not carry loads exceeding 10kg.

Telescopic slides

Pegasus Medical offers you combination of telescopic slides made of high-quality steel that can hold up to 40kg.



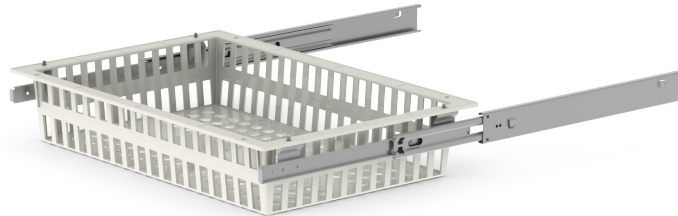
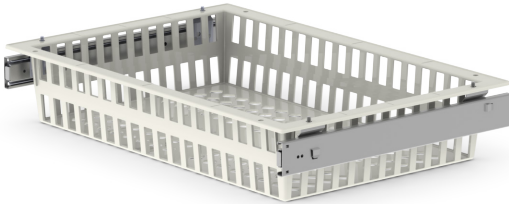
400mm telescopic slide
0920-1500-05



600mm telescopic slide
0920-1505-05



Durable steel telescopic slides
make for easy access



For safety, baskets on telescopic slides at levels above 1400mm can not carry loads exceeding 10kg.

Mounting plate for multiple
telescopic slides - 4 pieces

Tilt rails

Angled rail E-type

Angled rail U-type

380mm **0920-1710-05**

E-Type **0920-1410-10**

400mm **0920-1430-10**

600mm **0920-1440-10**

820mm **0920-1710-10**

U-Type **0920-1420-10**



Container and sterile pack storage system

Features

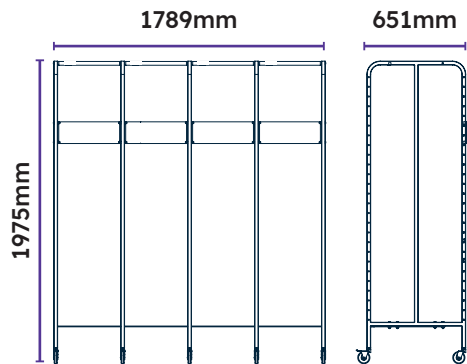
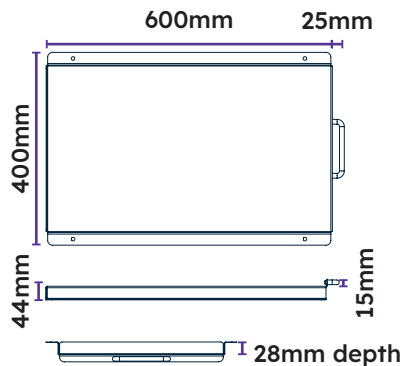
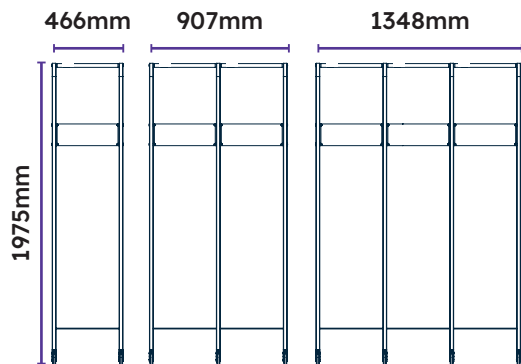
- Stainless steel container/pack beds will not rust and are scratch resistant. Unlike plastic or powder-coated shelves, our stainless steel beds will not release unwanted particles into your sterile environment
- A complete modular system: spacing between shelves can be reconfigured by the end user without using any tools
- Access to entire container/pack via 110% retractable extension slides
- Beds have raised side and back walls to assure containers/trays will not fall while beds are moved in and out
- Load capacity per shelf: 37kg



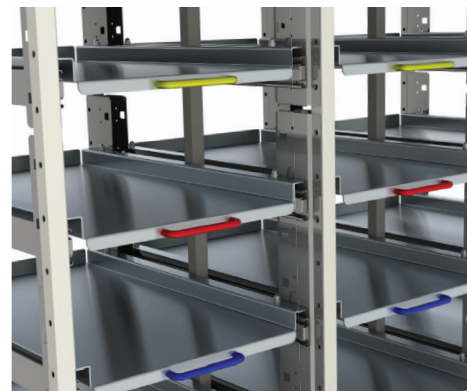
10 units per box. Telescopic slides and handles should be ordered separately.

Code: **0920-1700-05**

Rack and tray dimensions - U type



- Also available in 2100mm height by special order only
- Racks can be ordered with leveling feet instead of wheels. These reduce the overall height of the rack by 40mm
- Load capacity per rack 400kg



Colour coded handle system

Handle colours available

Yellow



Red



Blue



Matte aluminium

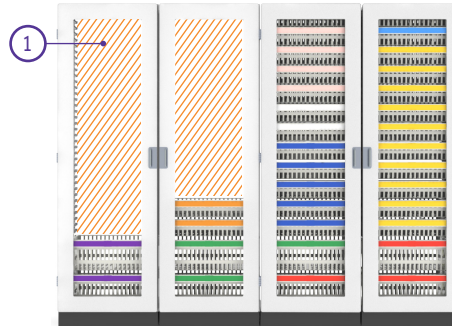


ISO 60-40 enclosed cabinets

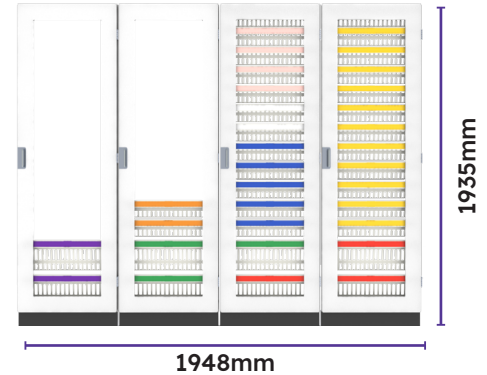
A modular cabinet system designed for 600mm x 400mm modular baskets

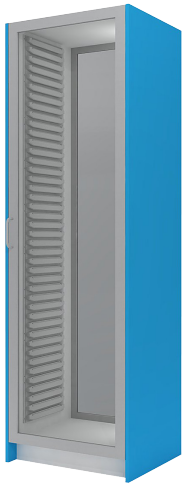
Features

- Manufactured from stainless or melamine. These standard modules are customised to suit customer requirements
- Baskets are fully retractable so no gaps are needed between the baskets. This maximises the available space and enables easy access to supplies at the back of the basket
- Clear line of sight, easy and ergonomic access to all baskets at the higher levels
- Can be decreased into 0.65m² footprint of dense storage



① Additional storage capacity





**Modular
high cabinet**

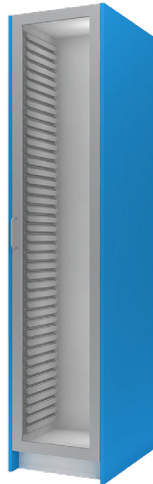
656mm x 575mm x
2172mm

Pass through

0915-2350-05

Normal

0915-2250-05



**Modular
high cabinet**

456mm x 775mm x
2172mm

Pass through

0915-2300-05

Normal

0915-2200-05



Modular low cabinet

656mm x 500mm x 868mm
(no top)

0915-2150-05



Modular low cabinet

456mm x 700mm x 868mm
(no top)

0915-2100-05

The joinery cabinets can be set up individually or grouped to make optimal use of available space. Cabinets are suited for freestanding and built in applications. Doors are made of solid aluminium or glass. Cabinets are available as normal and hand through variants.

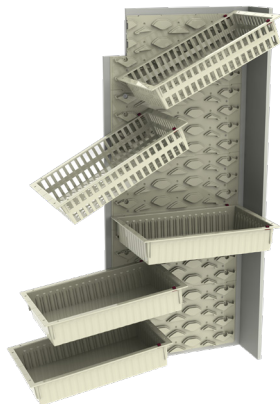
- Hand through option allows access from both sides
- Add door (solid or glass)
- Add two finished ends per cabinet or per cabinet group
- Colour options are available
- Bench top not included

Side panels for medical cabinets

With Pegasus Medical's side panels, cabinets can accommodate ISO trays and baskets.

Flex panel

Tilt panel



4 insertions

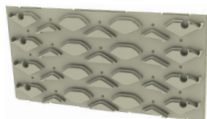
Horizontal or angle basket insertion.

Functionality

Fixed angled position in high levels for easy product picking and maximum visibility. Symmetrical usage.

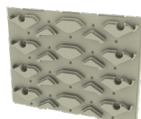
Accessories

Support wheel [0920-1490-05](#).



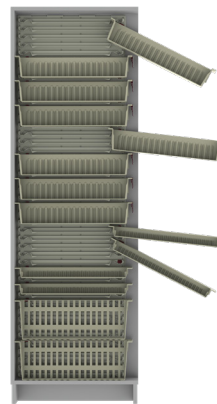
Flex panel E-type

400mm deep, 300mm high
[0920-1480-05](#)



Flex panel U-type

600mm deep, 300mm high
[0920-1485-05](#)



9 insertions

For maximum storage.

Functionality

Tilt functionality while modules are pulled out.

Accessories

Support wheels for "tilt" side panels
[0920-1470-05](#).



Tilt panel U-type

600mm deep, 375mm high
[0920-1465-05](#)



Tilt panel E-type

400mm deep, 375mm high
[0920-1460-05](#)

Storage carts

Tambour door

Tambour door carts are extremely useful in small rooms and corridors where a standard door would be impractical.

Apollo E single cart Apollo UU double cart Apollo UUU triple cart



Ergonomics

Mid-height handle eliminates the need to bend down to open the door.



Protective wall

Protective back wall prevents supplies from blocking the door.



1 Smooth operation

New counter-balanced system for smooth operation of roller shutter.



2 Easy cleaning

Simple, tool-free removal of the roller shutter for cleaning purposes.






3 Security

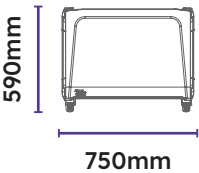
A variety of locks including: code locks, key locks, network locks, offered on the top or middle part of the doors. Locks can be programmed remotely using wifi, enabling limited access to staff.

Cart sizes: E type

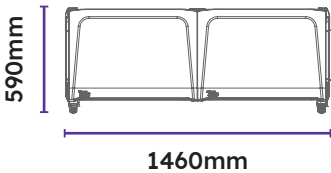
E type carts are available as single, double or triple, with four height options. The depth is fixed at 590mm.

		2 panels	3 panels	4 panels	4.6 panels
200mm	TD	3	5	7	8
	GD/SD/ND	3	5	7	8
100mm	TD	5	8	11	13
	GD/SD/ND	6	9	12	14
50mm	TD	8	13	17	20
	GD/SD/ND	9	13	18	21

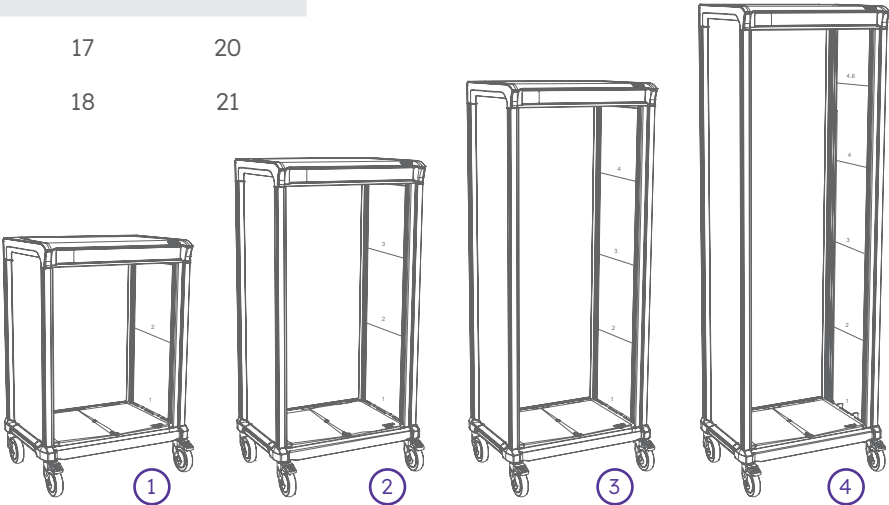
Single cart E



Double cart EE



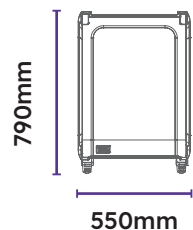
- ① 2 panels cart Height: 1090mm
- ② 3 panels cart Height: 1460mm
- ③ 4 panels cart Height: 1840mm
- ④ 4.6 panels cart Height: 2090mm



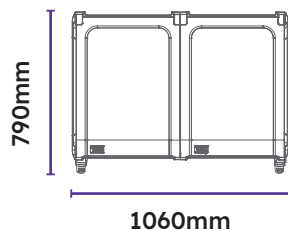
Cart sizes: U type

U type

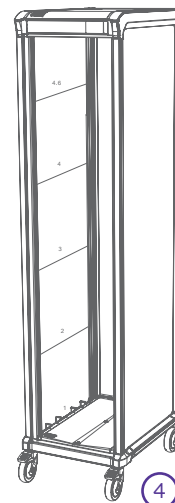
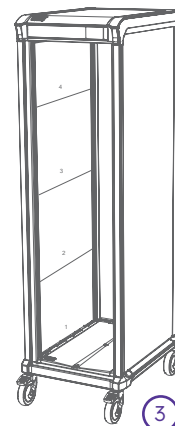
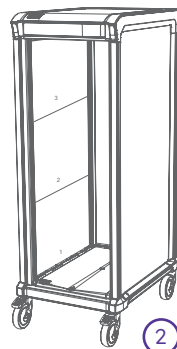
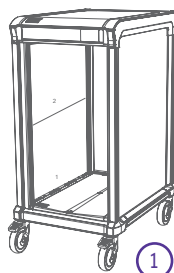
Single cart U



Double cart UU



- ① 2 panels cart Height: 1090mm
- ② 3 panels cart Height: 1460mm
- ③ 4 panels cart Height: 1840mm
- ④ 4.6 panels cart Height: 2090mm



ISO 60-40 open trolleys

Modular transport trolleys to fit the modular baskets

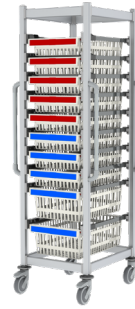
Baskets are purchased separately.



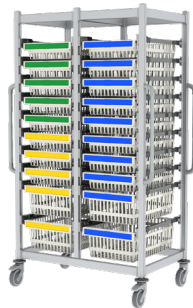
Hera service
cart E type
0920-1800-05



Hera service cart
double U type
0920-1810-05



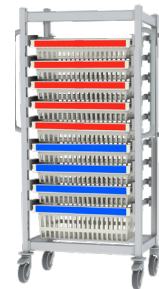
Salus transport
cart U type
0920-1860-05



Salus transport
cart double U type
0920-1865-05



Salus transport
cart triple U type
0920-1870-05



Salus transport
cart E type
0920-1850-05

Chrome wire

Chrome wire shelf units

Chrome wire shelving is self cleaning and compliant with AS/NZS 4187. Ideal for both bulk storage, steriliser cassette storage and consumable storage. Chrome wire static shelf units have 5 shelves.



- ① Clean edges won't snag or tear sterile wrap.
- ② Ledges contain stock along sides, back and front.
- ③ Dividers create multiple storage compartments on one shelf.
- ④ Available in chrome or epoxy coated finish.
- ⑤ Range of different heights available.
- ⑥ Height adjustable shelves. Range of sizes available.
- ⑦ Open mesh doesn't get dusty and wipes clean.
- ⑧ Can be fitted with castors for movable storage.

Features

- Chrome plated wire
- Suggested maximum shelf loading 80kg, evenly distributed
- Shelves can be adjusted to suit storage requirements

Chrome wire components



Chrome wire posts

Post 1600mm high (1740mm when on castors)

Post 1370mm high (1540mm when on castors)

Post 1880mm high (2040mm when on castors)

0910-1000-05

0910-1000-20

0910-1000-30



Chrome wire shelves 610mm deep

Shelf 610mm x 914mm **0910-1030-05**

Shelf 610mm x 1065mm **0910-1030-25**

Shelf 610mm x 1215mm **0910-1030-30**

Shelf 610mm x 1524mm **0910-1030-40**

Shelf 610mm x 1829mm **0910-1030-45**

Chrome wire shelves 457mm deep

Shelf 457mm x 914mm **0910-1010-05**

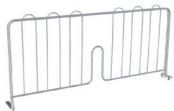
Shelf 457mm x 610mm **0910-1010-10**

Shelf 457mm x 1065mm **0910-1010-25**

Shelf 457mm x 1215mm **0910-1010-30**

Shelf 457mm x 1524mm **0910-1010-40**

Shelf 457mm x 1829mm **0910-1010-45**



Chrome wire divider 460mm

Shelf divider 457mm **0910-1056-05**

Shelf divider 610mm **0910-1056-15**



Chrome wire ledges

Ledge 457mm	0910-1050-05
Ledge 610mm	0910-1050-10
Ledge 914mm	0910-1050-20
Ledge 1065mm	0910-1050-25

Ledge 1215mm	0910-1050-30
Ledge 1524mm	0910-1050-45
Ledge 1829mm	0910-1050-50



Chrome wire handlebars

Handlebar 457mm	0910-1060-05
Handlebar 610mm	0910-1060-15



Castors

Castor buffer	0520-1300-05
Castor set 2x braked, 2x standard	0520-2500-10

Chrome wire baskets

Designed to replace non-compliant plastic louvre bins

Hangs on louvre panel.

1



2



3



1

1L chrome wire basket

0910-1510-05

2

2.5L chrome wire basket

0910-1520-05

3

6L chrome wire basket

0910-1530-05

4



4

12L chrome wire basket

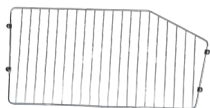
0910-1540-05

5

24L chrome wire basket

0910-1550-05

5



Chrome wire dividers

MediBin divider 502
- suits 6L basket

0910-1580-05

MediBin divider 503
- suits 12L basket

0910-1580-10

MediBin divider 504
- suits 24L basket

0910-1580-15



Louvre panels

457mm x 457mm

0910-3100-05

457mm x 914mm

0910-3100-10

457mm x 1829mm

0910-3100-20

Code		0910-1510-05	0910-1520-05	0910-1530-05
Description		1L chrome wire basket	2.5L chrome wire basket	6L chrome wire basket
Overall dimensions	H	85mm	125mm	165mm
	D	175mm	220mm	275mm
	W	100mm	135mm	205mm

Code		0910-1540-05	0910-1550-05
Description		12L chrome wire basket	24L chrome wire basket
Overall dimensions	H	165mm	220mm
	D	300mm	457mm
	W	435mm	435mm

Compactor shelving

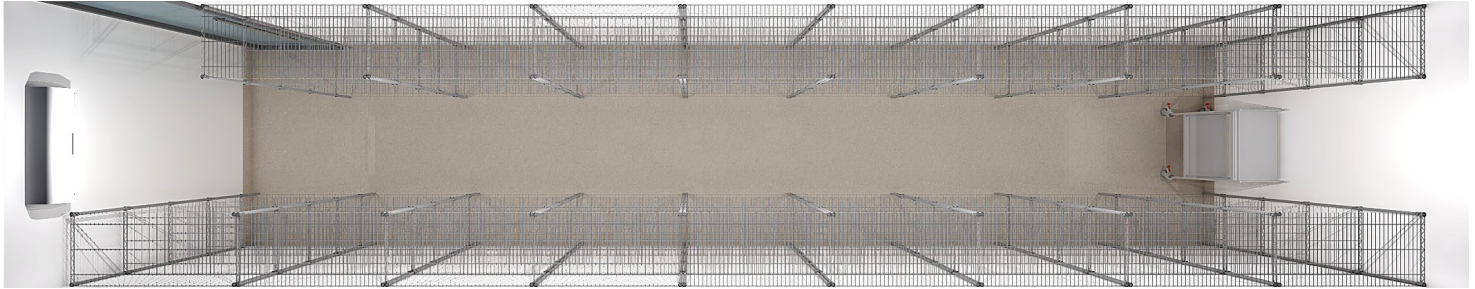
Chrome wire compactor units offer a high density mobile storage system that optimises the use of your storeroom

Chrome wire compactor shelves are designed and manufactured to meet standards for sterile stock storage AS/NZS 4187 and is ideal for dry storage areas, particularly in sterile hospital environments where cleanliness is essential.

It is available in a range of sizes to meet your requirements. Any number of mobile units can be installed to run along the tracking rails between the two static end units. The units come with 3 to 9 chrome wire, non-tear type, adjustable shelves, and mobile and static mid units can be added or removed as required.

A large selection of shelf widths and depths ensure the Compactor can be fitted to any storeroom. Ball-bearing wheels and top guides ensure the system will not bind up and remains easy to roll even when very heavily loaded.





Features

- No floor tracks — increased safety, no obstructions to trolleys
- Easiest to move compacting on the market even when loaded
- Stainless steel, solid wheel mounts and wheel guards
- Safe to mop as wheel carriers won't rust or track out of alignment
- Overall compactor height 2250mm
- Manufactured to meet standards for sterile stock storage AS4187
- Warehoused in Australia and New Zealand for quick delivery
- New Zealand manufactured components including wheels and track
- Ball bearings at post tops for easier movement
- Triple chrome wire non-tear type adjustable shelves
- Manufactured to meet occupational health and safety requirements

Get in touch at anytime on 0800 101 255 or email
hospitalcare@cubro.co.nz or visit **cubro.co.nz**